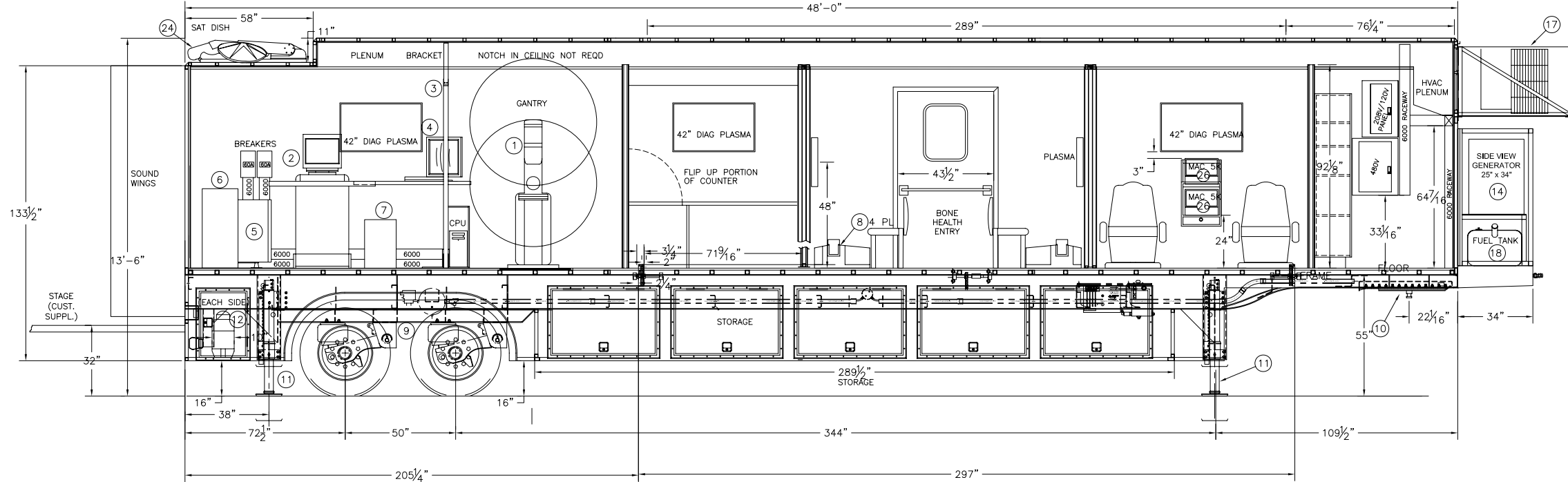
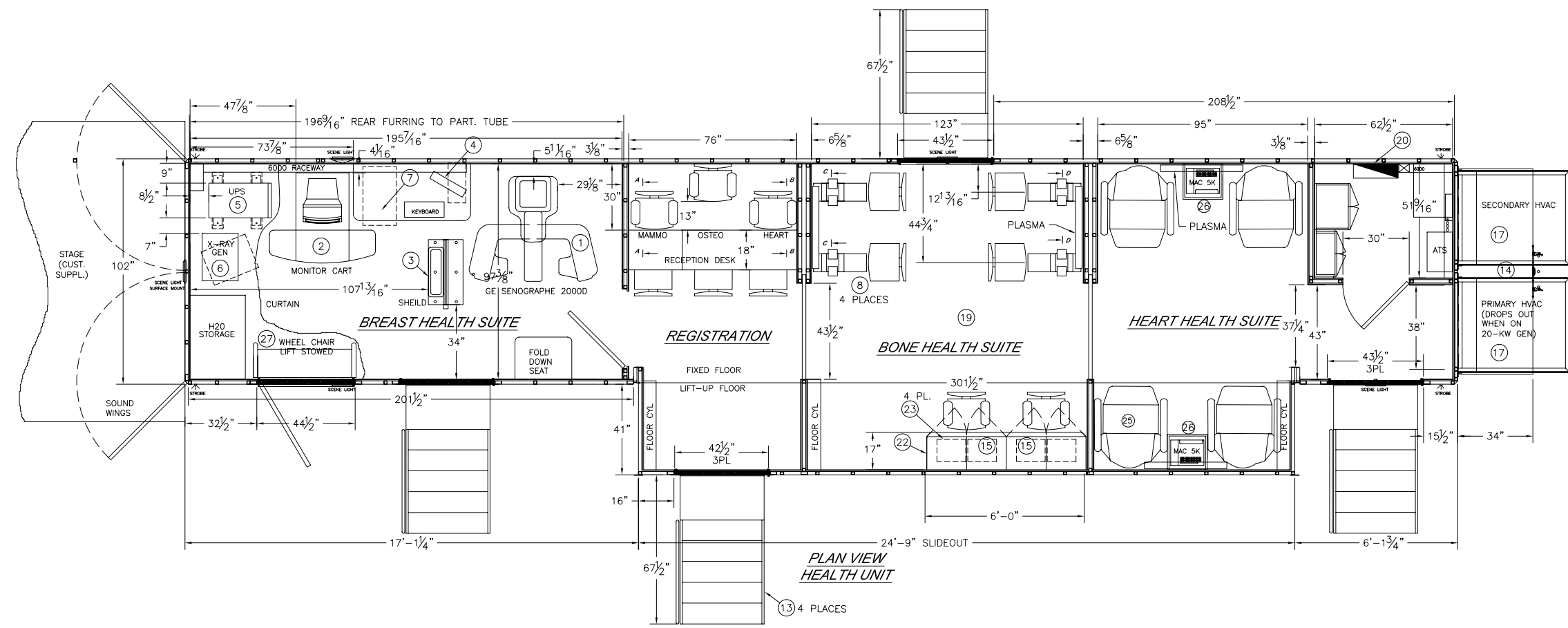


REVISIONS					
REV.	REV. DATE	CHK. BY	CHK. DATE	ENG.	DESCRIPTION
07	19SEP03	W.J.L.	19SEP03	DEK	AS-BUILT



ITEM	QTY	PART NUMBER	DESCRIPTION
27	1		WHEEL CHAIR LIFT
26	4		MAC LAB 5000
25	4		LAZYBOY "HARMONY" CHAIRS (CUSTOMER SUPPLIED)
24	1		IG-2500 MOBILE INTERNET SATELLITE SYSTEM
23	4		LAPTOP COMPUTER FOR DENSITOMETER (CUSTOMER SUPPLIED)
22	1		ROLL AROUND WORK STATION
21	1		PLASMA SCREEN (LOCATION & QUAN. TBD BY CUST)
20	1		LOAD CENTER, 208/3 & 480/3 STACKED
19	1		HIGH TRAFFIC, MEDICAL GRADE FLOORING THROUGHOUT
18	1		70 GALLON FUEL TANK
17	2		HVAC, 5-TON
16	-		NO GEMS WIRELESS LAN ANT
15	-		OVERHEAD STORAGE CABINETS
14	1		20KW GENERATOR
13	3		STAIR, HANDRAIL, PLATFORM ASSY
12	2		GE SMARTWATER DUAL SUMP
11	4		HYDRAULIC LEVELING LEGS, 32,000 LB. CAP.
10	1		AIR RIDE UPPER COUPLER (KING PIN)
9	1		AIR RIDE SUSPENSION, 34,000 LB CAP.
8	4		DENSITOMETER, GE ACHILLES INSIGHT (CUST. SUPL.)
7	1		CONDITIONER CABINET
6	1		XRAY GENERATOR CABINET
5	1		UPS (12.5 KVA)
4	1		TDK WORKSTATION
3	1		RADIATION SHIELD & CONTROL CONSOLE
2	1		MONITOR CART
1	1		GANTRY WITH DIGITAL DETECTOR (2000D FFDM)

BILL OF MATERIALS

THIS DRAWING IS PROVIDED ON A CONFIDENTIAL BASIS SUBJECT TO RETURN ON DEMAND OF OSHKOSH SPECIALTY VEHICLES ("OSHKOSH"), WHICH RETAINS ANY AND ALL RIGHTS ASSOCIATED WITH IT AND THE ARTICLE OR ARTICLES IT REPRESENTS. DISCLOSURE, REPRODUCTION OR ALTERATION OF ANY PART OF THIS DRAWING OR MANUFACTURE, USE OR SALE OF THE ARTICLE OR ARTICLES REPRESENTED, IS PROHIBITED WITHOUT THE PRIOR WRITTEN AUTHORIZATION OF OSHKOSH. © OSHKOSH SPECIALTY VEHICLES (unpublished).

CUSTOMER AUTHORIZATION

COMPANY NAME: _____

NAME (PRINT): _____ TITLE: _____

SIGNATURE: _____ DATE: _____

SHEET NUMBER: 1 OF 3
 JOB# _____

REFERENCE DRAWING: _____
 TITLE: GENERAL LAYOUT MOVING EXPERIENCES HEALTH UNIT 8'-6" X 13'-6" X 48'-0" TRAILER

DATE: 21JAN03
 DRAWN BY: _____

SCALE: 1/2"=1'-0"
 CHECKED BY: _____

DRAWING NUMBER: 10240-A01

OSHKOSH SPECIALTY VEHICLES
 16745 S. LATHROP AVENUE
 HARVEY, IL. 60426
 PHONE: (708) 596-5066
 FAX: (708) 596-2480